



There are over 70 owls & other birds of prey plus meerkats, ferrets, porcupines, armadillos and other friends at the Sanctuary plus picnic areas and a woodland walk.

# Suffolk Owl Sanctuary

AND NATURE CENTRE

Regd. Charity No. 1086565

- The Flying Ground
- Seating Area
- Walk through to SOS2 for more Aviaries, Meerkats, Armadillos, Presentation Theatre, Sand Pit, toilets & baby changing

● Woodland Walk including Crested Porcupines and our Ferret Family. We have some special new guests arriving through the summer, with new enclosures being prepared for Red Squirrels and Wildcats!

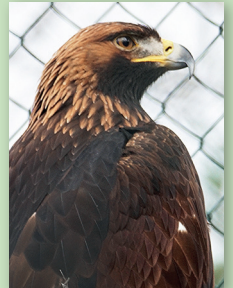
- Owl & Bird of Prey Aviaries
- Sensory Garden
- Raptor Hospital



- Presentation Theatre
- Bizzie Bee Indoor Play Area
- Suffolk Wildlife Information
- Education Centre / Party Room
- Toilets & baby changing

**Don't forget to visit SOS2!**

- Golden Eagles
- Owl & Bird of Prey Aviaries
- Hedgehog Hotel
- Sand Pit & Picnic Area
- Meerkat Kastle
- Armadillos



Wheelchair Friendly Throughout

- Tickets
- Owl-orama Gift Shop
- Discovery Centre
- Inclusive Play Area
- Mini Maze

**New for 2024**  
**Close Encounters & Experiences**  
 Join our team for some up-close & personal time with our amazing birds and animals

- Meet the Meerkats Encounter
- Porcupine & Armadillo Encounters
- Owls in Flight Encounter
- Animal Keeper Half Day Experience
- Bird Keeper Half Day Experience
- Keeper for the Day Experience



Scan me for more about Close Encounters and Experiences

**DAILY EVENTS** (times may vary)

**WINTER:** October to end March  
 Watch our birds being exercised during the day when weather permits • Animal Talks throughout the day

**SUMMER:** End March to October  
 11.00am Animal Talk  
 11.30am Flying Display  
 2.00pm Animal Talk  
 2.30pm Flying Display  
 3.30pm Animal Talk

For operational reasons some birds and animals may be not be on public display at all times. We apologise for any disappointment this may cause.



Please ...  
**ADOPT-AN-OWL or SPONSOR A WILD OWL NEST BOX**  
 Please ask at reception for details





# STONHAM

BARNs PARK

Holiday entertainment in the heart of Suffolk



Holiday Lodges



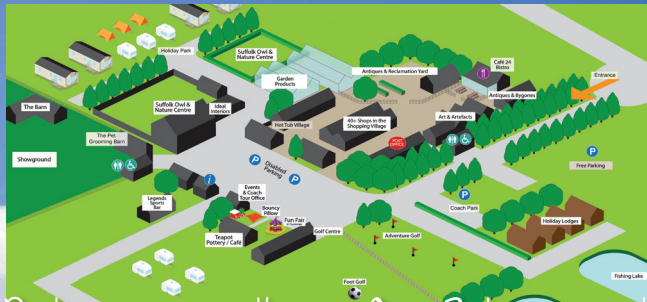
Art & Artefacts



Antiques & Bygones



Vintage funfair



Pedestrian friendly • Open 7 days a week

Stonham BARNs Park,  
Stonham Aspal IP14 6AT  
tel. 01449 711111  
[www.stonhambarns.co.uk](http://www.stonhambarns.co.uk)

Scan  
me for  
info



# STONHAM

BARNs PARK

Holiday entertainment in the heart of Suffolk



Pottery Painting



Holiday Homes



Adventure Golf



Vintage Car Shows



Showground Events



Cafe 24 Bistro



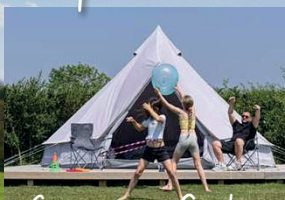
Village Shopping



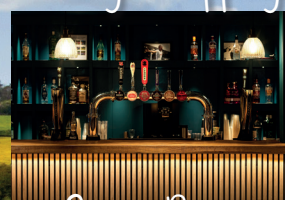
Traditional Teas



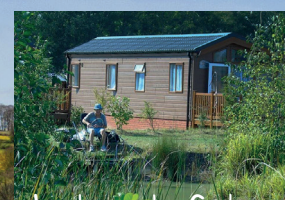
Nature Centre



Camping Galore



Sports Bar



Lakeside fishing

# Suffolk Owl Sanctuary

Regd. Charity  
No. 1086565

and Nature Centre

at **STONHAM BARNs PARK** on the A1120



including  
**MEERKAT CASTLE**



Open daily 10am - 5.00pm March - October  
Open 10am - 4.00pm November - February



Scan me for info

Stonham BARNs Park, Stonham Aspal  
IP14 6AT • tel: 0345 680 7897  
[www.suffolkowls.org.uk](http://www.suffolkowls.org.uk)